



#EVERYTONNECOUNTS

**STACK MORE
FOR LESS**

**STACK MORE
FOR LESS**





**IMPROVED
PRODUCTION**



**IMPROVED
MATERIAL QUALITY**



**REDUCED OPERATIONAL
COSTS**



**IMPROVED
HEALTH & SAFETY**



MATERIAL HANDLING

PRODUCT LINE UP

MS SERIES

WHEEL MOUNTED
RADIAL STOCKPILER



- MS30
- MS40
- MS50
- MS80
- MS100

TS SERIES

TRACK MOUNTED
STOCKPILER



- TS50
- TS60
- TS80
- TS100

TSR SERIES

TRACK MOUNTED
RADIAL CONVEYOR



- TSR80

MTS SERIES

MOBILE RADIAL
TELESCOPIC STOCKPILER



- MTS140

FS SERIES

DIRECT FEED
STOCKPILER



- FMS65
- FMS75
- FTS65
- FTS75
- FTS90
- FTS 360°

LTS SERIES

LOW FEED
STOCKPILER



- LTS65
- LTS75
- LTS 360°

RTU SERIES

RADIAL TRUCK
UNLOADER



- RTU220
- RTU320



EDGE Innovate's range of Material Handling Equipment offers operators an efficient, reliable and robust material handling solution. The EDGE brand name is intrinsically linked to the manufacturing of mobile and track conveyors, feeders and radial track stockpilers. Our solutions have been designed with productivity whilst minimising operator costs as their central design principle. Thanks to this philosophy; EDGE Innovate can offer the most cost effective and efficient way of stockpiling or transferring material on the market today.

After 20 years as a leading manufacturer of conveying solutions, EDGE Innovate are acutely aware that one style of conveyor is nowhere near sufficient enough to meet the differing requirements of each material handling operation. With a 'one size does not fit all' mind-set, EDGE Innovate's material handling range of equipment offers operators a wide range of stacker and feeder formats to suit your specific material handling requirement.

MS-SERIES MOBILE STOCKPILER



With over 1000 mobile stockpilers manufactured and working across the world to date, the EDGE range of mobile stackers have been tried and tested in the harshest of environments. With productivity, mobility and minimising operator costs as its central design principles, the MS-Series range of conveyors are the most cost effective and efficient way of stockpiling or transferring material on the market today.

Designed to work in conjunction with; screeners, crushers, grinders and washing equipment; the MS-Series wheeled stockpile conveyor has the capacity to deal with high production requirements and to facilitate the creation of larger stockpiles. The radial stockpile feature on the MS-Series reduces on site material handling by eliminating the need for continuous movement of material by wheeled loaders.

Create huge conical & radial stockpiles and allow screens and crushers to increase daily productions by up to 40% with the incorporation of EDGE mobile stockpilers!

KEY HIGHLIGHTS

- Eliminates the need for wheel loaders to build stockpiles, reducing labour and maintenance costs.
- Can be coupled with any Crusher, Screen, Shredder or Wash Plant
- Eliminates material segregation and ensures stockpiled material meets required specification.
- Discharge height of up to 8.3m (27'5").
- Create radial stockpiles of up to 22,622m³ (29,588yds³).





EDGE Innovate has taken decades of experience in manufacturing conveyors and created a Track Stacker series that offers operators an efficient, reliable and robust material handling solution. Designed to work in the harshest of environments the TS-Series can be continually fed by any crusher, screener or shredder with a rapid set-up time and impressive stockpiling capacities. The EDGE Track Stockpiler is a versatile conveyor that can be used in a wide range of applications.

The Track Stacker series boasts an array of design features including a highly efficient hydraulic drive system with variable belt speed, low fuel consumption, adjustable feed height and variable discharge height. Whether it be; sand and gravel pits, aggregate producers, mulch yards or waste management facilities; the EDGE TS-Series is the perfect stockpiling solution for a vast range of industries.

KEY HIGHLIGHTS

- Can reduce fuel, maintenance and labour costs by up to 80%.
- Hydraulic adjustable feed height reduces impact and dust creation.
- Eliminates material segregation and ensures stockpile meets required specification.
- Discharge height of up to 13.2m (43'4") .
- Create conical stockpiles of up to 1472m³ (1925yds³).



TSR-SERIES RADIAL TRACK STOCKPILER



The EDGE TSR80 is a 80ft long tracked mounted conveyor with radial stockpiling functionality. The core design principal for the TSR80 has been to provide customers with an easily transported stacker that can be moved nationally and internationally with minimal fuss or cost. Designed to fit into a 40ft high cube container, with only small assemblies to be refitted upon arrival thanks to its' simple track in, track out philosophy.

Thanks to the robust design of the track stacker range and the ability to radial hydraulically; the TSR80 is capable of creating vast stockpiles with a throughput of up to 700 TPH (771 UST/hr).

Additional features include adjustable feed and discharges heights, a 1200mm (48") wide discharge conveyor, automatic stockpiling programs and a 4X4 drive system which enables the TSR series to navigate across the roughest terrains and to create stockpiles using it's crab movement functionality.

KEY HIGHLIGHTS

- Tracked mounted unit with added radial stockpiling functionality.
- Includes optional automatic stockpiling programming allowing minimal supervision.
- 1200mm (48") wide discharge conveyor with throughput of up to 700TPH (771 UST/Hr)
- Discharge height of up to 11.8m³ (38'8").
- Create radial stockpiles of up to 34237m³ (40947yds³) @ 180°.





EDGE Innovate's MTS140 is a mobile mounted 140ft (42.2m) long telescopic stockpiler. It offers operators the most cost effective bulk material handling solution on the market. The MTS140 allows operators to achieve maximum stockpile capacity using a robust, fully automated stockpiling solution that eliminates the doubling handling of material and maintains high quality material via the creation of windrow stockpiles.

Boasting an array of design features, the MTS-Series includes an automated stockpiling control system, variable discharge height and belt speed and the option of direct electric or diesel genset power sources. Whether it is; sand and gravel pits operators, aggregate producers, inland or port terminals; the EDGE MTS-Series is the perfect stockpiling solution for a vast range of applications and material types.

KEY HIGHLIGHTS

- Eliminates the double handling of material.
- Fully automated stockpiling programmes reducing labour requirements.
- Eliminates material segregation and ensures stockpile meets required specification.
- Fully extendable conveyor of up to 42.2m (140') long.
- Impressive stockpiling rates of up to 1000+ Tonnes per hour.



FS -SERIES DIRECT FEED STOCKPILER



EDGE Innovate's range of Feeder Stackers have the ability to handle a wide range of applications and capacity requirements. Available with discharge conveyors from 30ft to 90ft, various chassis formats, power-source options and infinite number of add on options such as a two deck vibrating live head, overband magnet, wireless remote functionality and radio reject grid. The Feeder Stacker range is arguably EDGE Innovate's most versatile product.

Designed for customers who either require a controlled flow of material output or need to direct feed using an excavator or wheel loader; the FS-Series eliminates the need to double handle material. With its excellent ability to hold a buffer of material; the EDGE Mobile Hopper Feeders can regulate the flow of material ensuring it is the perfect partner for barge, train or truck loading or to feed crushers and screeners.

Effectively; the EDGE FS-Series eliminates the need to have both a separate hopper feed unit and a stacker unit. As with all EDGE Innovate's products; the FS-Series can be customised to suit the client's specific requirements.

KEY HIGHLIGHTS

- Eliminates the need for a separate feeder and stockpiler units.
- Can receive loads directly from Excavator, Loader, Crusher or Screener.
- Holds a buffer of material to regulate the flow material preventing material surge.
- Maximum discharge height of up to 12.1m (39'10").
- Conical stockpile up to 4030m³ (5271 yds³).





The Low-Level Feed Stocker series introduces operators to a material handling solution for the stockpiling and transferring of hard rock and ore for the mining and quarrying industries. The EDGE LTS is a long life, low maintenance, track feeder stockpiler that is uniquely designed to allow for low level loading of material from wheel loaders, grab cranes and excavators. The huge hopper capacity and heavy duty feeder enables the LTS Series to easily cope with the extreme demands of any quarrying or port handling application.

With a rapid set-up time, ability to be loaded from all three sides and impressive stockpiling capacities; the EDGE Low-Level Feeder Stockpiler is a versatile conveyor that can be used in a wide range of material handling applications.

KEY HIGHLIGHTS

- Can be fed from all three sides with no ramp construction required.
- Can transfer large, heavy loads thanks to its 9000Nm torque feeder.
- Designed for taking the impact of larger, heavier material that conventional belt feeders cannot.
- Maximum discharge height of up to 9.3m (30'2").
- Conical stockpile up to 1718m³ (2247yds³).



RTU -SERIES

RADIAL TRUCK STOCKPILER



The EDGE RTU Series brings a new concept to the bulk materials handling sector. Unlike conventional truck unloaders, the EDGE Radial Truck Unloader is able to be set up in minutes and eliminates the need to double handle material. Designed to allow operators to load directly from tipping trucks, dumpers and wheel loaders; the 52' long discharge conveyor enables material to be loaded into train wagons, barges, ships and hoppers. Unloading times as little as 60 seconds per truck and a massive 30yd³ hopper capacity enables the EDGE portal Truck Unloader to significantly improve cycle times and on-site production.

With the capability to convey up to 750 tonnes per hour with a maximum feed size of 23" and boasting a 140° radial conveyor; the RTU220 is as comfortable on the port as it is in the harsh environment of the quarry.

KEY HIGHLIGHTS

- Greater operating efficiency by reducing the need to re-handle material.
- *Capacity to convey 750TPH (826UST) with a maximum feed size of 600mm (23").
- Unload directly from articulated road lorries and dump trucks.
- Unloading times as little as 60 seconds per truck.
- Optional 140° Radial conveyor with impressive radial stockpiling capabilities.

**Capacity dependent on cycle times.*





HYDRAULIC COUPLING (MS-SERIES ONLY)

Provides operators with the option of running the conveyor via the auxiliary control valve on the crusher or screen. Alternatively an EDGE stacker may be powered via a motor return which has sufficient hydraulic flow.



DIESEL / HYDRAULIC

Enables the EDGE unit to be operated in remote locations due to being self-contained with only fuel being required.



DIRECT ELECTRIC

Electric-powered equipment can significantly reduce operating and maintenance costs, while providing unbeatable dependability and uptime.



DUAL POWER

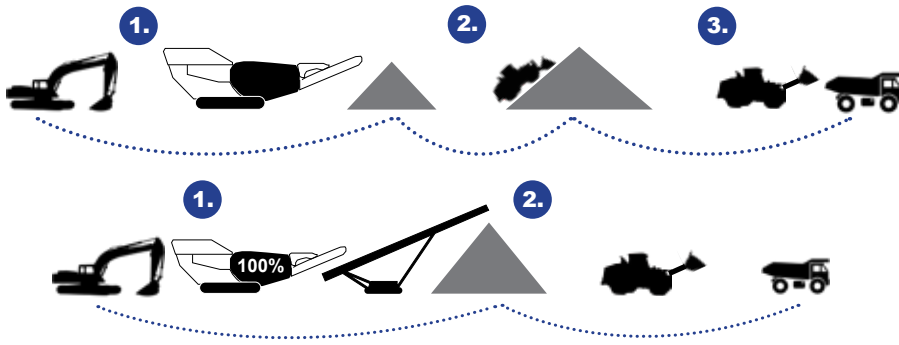
Enables operators to run set up functions such as tracks and discharge angle adjustment via the diesel hydraulic power-pack. Once in position, operators can run conveyor belts electrically. This is the ultimate in running cost efficiency.



DIESEL GENSET

Provides operators with three running options. To run conveyor belt via direct electric, to connect to the mains electric and to couple up with another diesel or diesel electric unit close by.

STOCKPILER OPERATIONAL BENEFITS



**MATERIAL HANDLED
33% LESS**

€ CAPITAL EXPENDITURE



STACKER COSTS
>50% LESS
TO PURCHASE

FUEL EXPENDITURE



25 Ltr/Hr

12 Ltr/Hr

**OVER 50%
LESS IN FUEL COSTS**

LABOUR



85% LESS
IN OPERATOR COSTS

MAINTENANCE



80% LESS
EXPENSIVE TO MAINTAIN
THAN WHEEL LOADERS

MATERIAL TRANSFER



500TPH MORE
MATERIAL STOCKPILED
WHEN UTILISING
STOCKPILERS

STOCKPILE HEIGHT



GREATER STORAGE CAPACITY



HEALTH & SAFETY

Increase site safety by reducing traffic levels and eliminating the use of loaders stockpiling material.



ENVIRONMENTAL

With a reduced dependency on wheel loaders and reduced number of moving vehicles on site, operators will benefit from reduced noise, dust and engine emissions.



PRODUCTION

Increase operational production rates. Excavators/ wheel loaders are now free to concentrate solely on the continuous loading of material to crushers, screeners and delivery trucks.



MATERIAL QUALITY

Improved material quality by reduced compaction, degradation, segregation and contamination through compacting and crushing.

PRODUCT AND TECHNICAL SUPPORT

TRIED, TESTED & TRUSTED THROUGHOUT THE GLOBE

With our ethos of *"Innovation at Work"* EDGE not only persist in pushing the boundaries of design and manufacturing to produce hard working, quality machinery; we also bring that same ethos to our aftersales service in order to bring real benefits to customers right across the world.

At EDGE, we like to see the sales transaction as the start of a long-term partnership. Our goal is to offer the best customer support in the market for the lifetime of the unit. EDGE has reinvested and expanded our After-sales department in order to streamline and provide the customer support we believe our customers deserve.



TECHNICAL ASSISTANCE



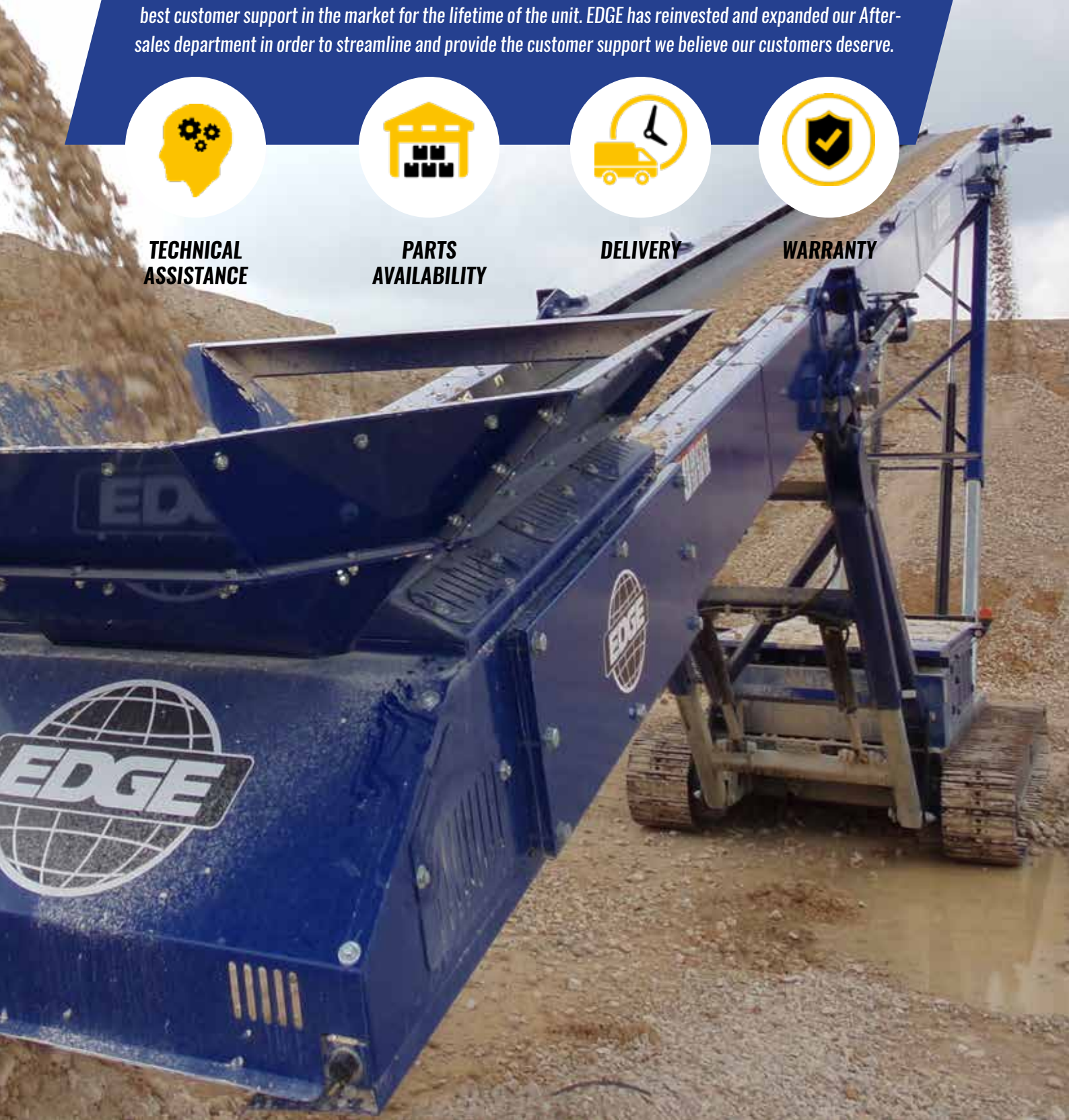
PARTS AVAILABILITY



DELIVERY



WARRANTY





**CONTACT US
TODAY.**



30 Farlough Road, Dungannon, Co.Tyrone, BT71 4DT, Northern Ireland

+44(0)2887 740525 info@edgeinnovate.com edgeinnovate.com